

Instruction Book For
Model 5000 Portable
Standard Model (120 VAC 60 Cycles)



The
POWER *In*
PRESENTATION PRODUCTS



DA-LITE SCREEN COMPANY, INC.

3100 North Detroit Street
Post Office Box 137
Warsaw, Indiana 46581-0137
Phone: 219/267-8101
800-622-3737
Fax: 219/267-7804
[http:// www.da-lite.com](http://www.da-lite.com)
e-mail: info@da-lite.com

The “Safeguards” statement reproduced below is in accordance with Underwriters Laboratories “Standard for Safety, UL 122, Photographic Equipment.”

IMPORTANT SAFEGUARDS®

When using your photographic equipment, basic safety precautions should always be followed, including the following:

1. Read and understand all instructions.
2. Close supervision is necessary when any appliance is used by or near children. Do not leave appliance unattended while in use.
3. Care must be taken as burns can occur from touching hot parts.
4. Do not operate appliance with a damaged cord or if the appliance has been dropped or damaged—until it has been examined by a qualified serviceman.
5. Do not let cord hang over edge of table or counter or touch hot surfaces.
6. If an extension cord is necessary, a cord with a suitable current rating should be used. Cords rated for less amperage than the appliance may overheat. Care should be taken to arrange the cord so that it will not be tripped over or pulled.
7. Always unplug appliance from electrical outlet when not in use. Never yank cord to pull plug from outlet. Grasp plug and pull to disconnect.
8. Let appliance cool completely before putting away. Loop cord loosely around appliance when storing.
9. To protect against electrical shock hazards, do not immerse this appliance in water or other liquids.
10. To avoid electric shock hazard, do not disassemble this appliance, but take it to a qualified serviceman when some service or repair work is required. Incorrect reassembly can cause electric shock hazard when the appliance is used subsequently.

SAVE THESE INSTRUCTIONS

© Copyrighted Underwriters Laboratories
“Standard for Safety, UL 122, Photographic Equipment”

INTRODUCTION

Congratulations! You have just purchased one of the finest overhead projectors available today. The Model 5000 overhead projector is manufactured to Da-Lite's high quality standards. As illustrated in this instruction manual, this projector will allow you all the flexibility and reliability you will need for trouble-free presentations.

This instruction manual explains assembly and operation of the Model 5000 Portable projector. While this projector has operating and maintenance instructions printed on it, please read this manual thoroughly so you can optimize usage of the many features your projector has to offer.

ASSEMBLY INSTRUCTIONS: Model 5000 Portable Projector

1. Remove the projector from the shipping carton carefully.
2. Grasp the carrying handle (A), and position the projector on its side with the handle upward. Remove the protective dust cover (see figure 1).

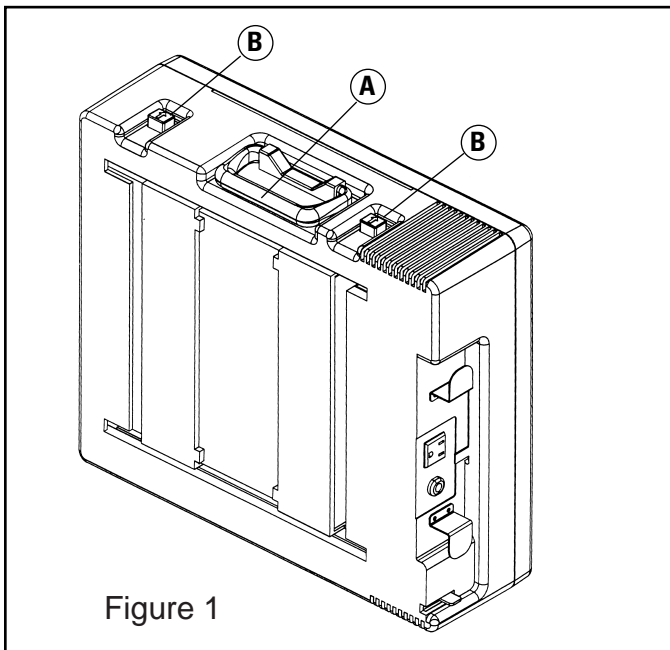


Figure 1

3. Release both leg latches by pressing in the direction indicated by the arrows (see figure 1). The leg latches (B) are located one on either side of the carrying handle. Press the leg latch firmly until it releases the leg and the leg folds outward. Release the latch. This will lock the leg in the extended position. Repeat to extend and lock both legs.

NOTE: When folding legs for storage, the leg latch must be released prior to folding leg.

4. Grasping the projector firmly, set the projector upright onto its legs.
5. Release the lid latch (C) on the side opposite the carrying handle and open the lid (see figure 2).

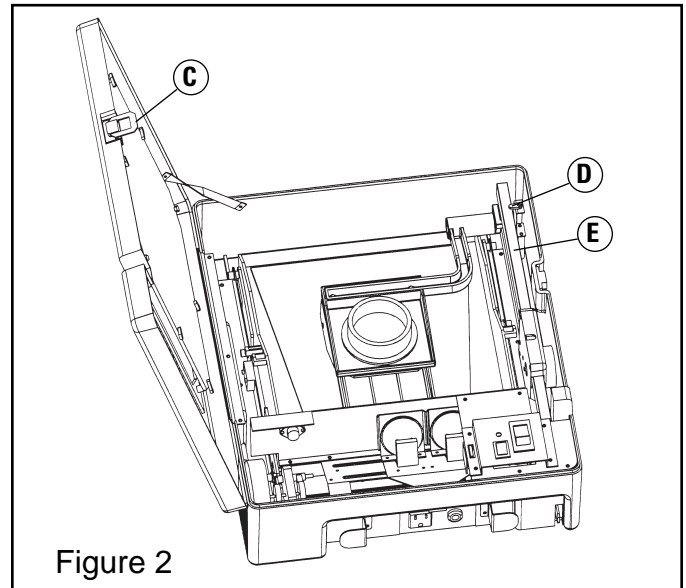


Figure 2

6. Rotate the post hold down latch (D) sideways to release the folded post assembly. Grasp the top of the folded post (E) (near the latch) and pull upward. This will rotate the post, horizontal arm, and projection head assembly to the upright position. The bottom mirror will lower into position as the post is raised. Continue rotating the post assembly upward until it locks into the fully upright position (see figure 3).

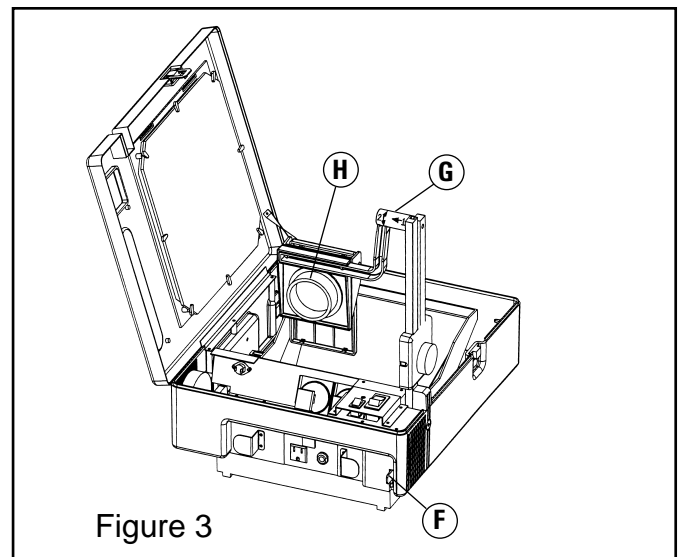


Figure 3

NOTE: When folding the post for storage, the post latch release lever (F) must be pressed to release the post prior to rotating the post.

7. While holding the top of the post, grasp the horizontal arm (G) and pull sideways in the direction indicated by arrow #1, and rotate the arm to bring the projection head assembly (H) up into viewing position (See figure 4). Release the arm and it will spring back and lock into viewing position.

ASSEMBLY INSTRUCTIONS: Model 5000 Portable Projector (cont.)

- Rotate the focus control knob (I) counter-clockwise to raise the arm and head assembly. Raise this assembly just high enough to clear the lid as it is closed.
- Close and latch the projector lid.
- Rotate the upper mirror (J) on the projection head assembly into viewing position.

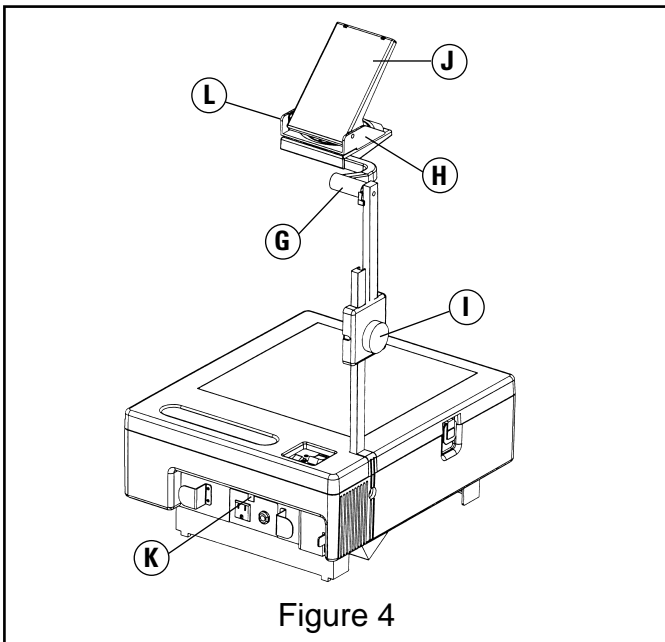


Figure 4

OPERATING INSTRUCTIONS: Model 5000 (figure 4)

- Slide the lamp changer lever (K) to extreme left or right position.
- Select high or low power setting with the high/low switch.
- Turn on/off switch to the "on" position.
- The spare lamp indicator will light only if the spare lamp is installed and in good condition.
- Place projection copy or LCD platen on projection stage.
- Raise or lower image location on screen by tilting the upper mirror on head assembly.
- Focus image on screen by turning the focusing knob, which raises or lowers the projection head.
- To use the lamp changer, turn power switch "off". Slide lamp changer lever to opposite extreme position. Turn power switch "on".

For your convenience, this projector has an upper mirror assembly which can be rotated 360°. This allows image projection in any direction.

To rotate the upper mirror assembly, firmly grasp the lower portion of the projection head assembly and hold stationary, while rotating the upper portion (L) of the projection head assembly.

The rotating upper head has detents at 90° intervals which will latch the upper mirror into position at exact 90° locations.

LAMP CHANGER INSTRUCTIONS

MODEL 5000

Uninterrupted service during presentation is permitted with the lamp changer which allows you to switch from a burned out lamp to a new one, merely by sliding a lever on the outside of the case. A highly visible LED gives instant indication of the spare lamp condition (use of lamp changer requires prior installation of second lamp, ANSI code FXL).

To use lamp changer, turn power switch "off". Slide lamp changer lever to the opposite extreme position. Turn power switch "on".

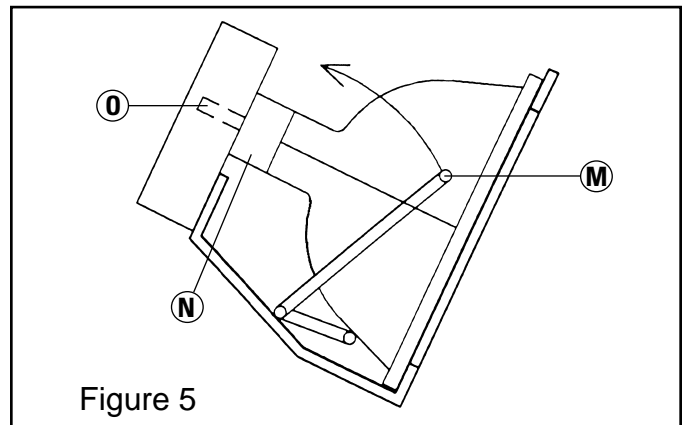


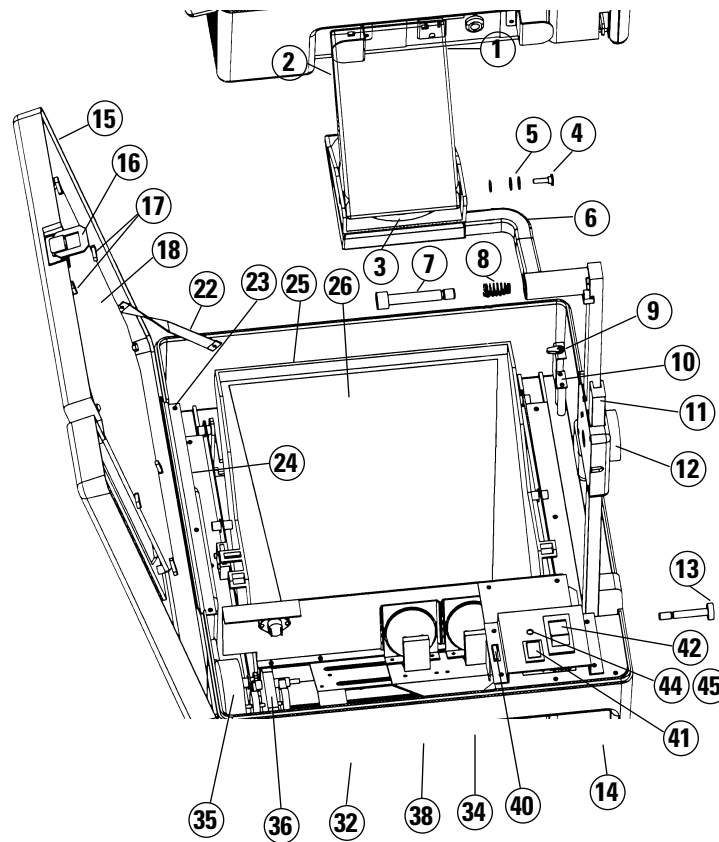
Figure 5

LAMP REPLACEMENT (figure 5)

- Turn off the projector and disconnect the power cord from the electrical outlet.
- Allow the projector to cool down until the lamp is cool to touch.
- If changing the right bulb, move the lamp changer to its extreme left position. If changing the left bulb, move the lamp changer to its extreme right position.
- Rotate bulb ejection lever (M) as shown in figure 5 to eject the bulb.
- To install a new lamp, hold lamp by base (N) and insert the two pins on the lamp into the matching slots in the socket (O).

NOTE: Make sure the lamp is pushed into the socket completely, otherwise the filament of the lamp will not be located for proper operation.

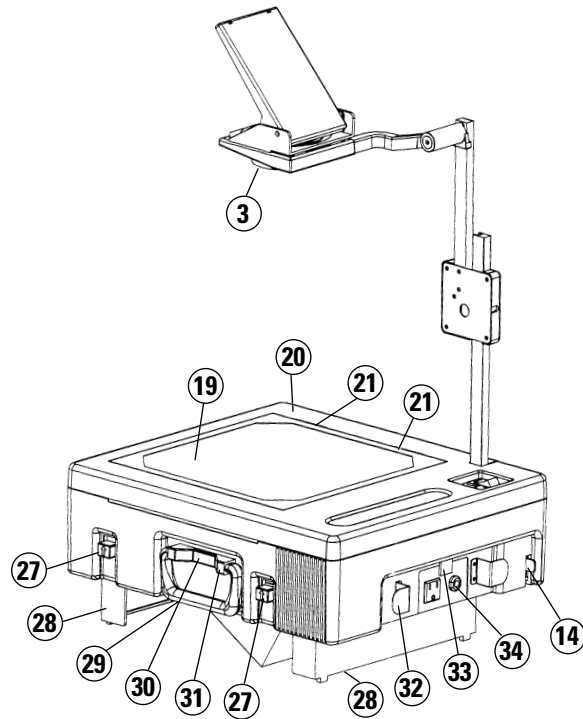
MODEL 5000 PORTABLE PROJECTOR REPLACEMENT PARTS:



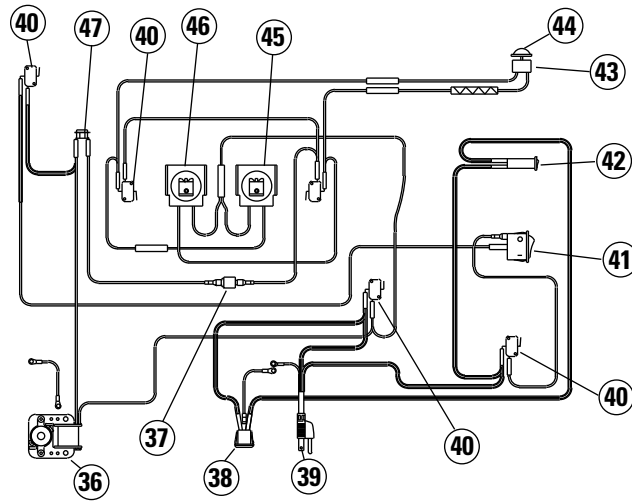
REF. NO.	DESCRIPTION	QTY/ UNIT	DA-LITE NUMBER
1	Head assembly	1	77920
2	Head mirror, 1/8" T	1	77819
3	TR-13B Triplet lens	1	77871
4	Shoulder screw .242x.218 8-32	2	77938
5	Bow washer, .437ODx.255ID	6	77095
6	Horizontal arm, black	1	77922
7	Shoulder screw 3/8"x2" 5/16-18	1	77835
8	Compression spring, 1/2" OD x 1" L	1	77836
9	Flush retainer	1	77888
10	Post locking bracket	1	77859
11	Post assembly	1	77919
12	Black knob, 1/4" bushing	1	77860
13	Bolt, carriage 1/4"-20x1.80L	1	77829
14	Post locking lever	1	77933
15	Cover & fresnel assembly	1	77918
16	Mini latch, black	1	77935
17	Flush retainer	8	77888

REF. NO.	DESCRIPTION	QTY/ UNIT	DA-LITE NUMBER
18	Fresnel lens, 50lpi 310mm sq	1	77820
19	Glass, 10-1/2"x10-1/2" border	1	77895
20	Plastic top	1	77803
21	Glass retainer clip	2	77866
22	Plastic strap, 1/2"x5-5/8"	1	77926
23	Tap screw 6x3/8"	6	77814
24	Piano hinge, black	1	77849
25	Mirror & box assembly	1	77913
26	Mirror, 1/8" T x 7" x 10.20" x 10.98"	1	77873
27	Leg latch, arrow	2	77929
28	Dark grey leg	2	77801
29	Handle, black	1	77810
30	Handle base, nickel	1	77850
31	Handle cap, w/logo	1	77944
32	Cord wrap clip, black	2	78245
33	Plastic button, red	1	46030
34	Strain relief bushing, SR 5N-4	1	77870
35	Impeller, 3-1/2" cw celcon	1	77845

MODEL 5000 PORTABLE PROJECTOR REPLACEMENT PARTS:



PORTABLE PROJECTOR WIRING DIAGRAM



REF. NO.	DESCRIPTION	QTY/UNIT	DA-LITE NUMBER
36	Blower & motor assy, 120v	1	77914
37	Diode, rectifier	1	51606
38	Receptacle, nema 5-1 3/16" term.	1	77892
39	Cord set, 120v SVT 10'	1	77848
40	Push switch, spdt	1	51542
41	Switch, 10.0 amp tungsten rated	1	77934

REF. NO.	DESCRIPTION	QTY/UNIT	DA-LITE NUMBER
42	Circuit breaker, 7 amp	1	50451
43	Resistor & connector assembly, 120V	1	77917
44	Led diode, red	1	51585
45	Lamp holder assembly, 120V	1	77915
46	Lamp, 410 watt 82V GE FXL	2	77842
47	Thermal switch, open 240F	1	51551

TROUBLE SHOOTING

SYMPTOM	CAUSE	SOLUTION
1. Lamp will not light.	(a) Mirror box not down completely. (b) Lamp changer not in extreme left or right position. (c) Lid not closed completely. (d) Lamp burned out	(a) Remove obstruction and/or tilt mirror box completely. (b) Move lamp changer to extreme left or right. (c) Close and latch lid securely. (d) Switch to spare lamp or replace lamp.
2. No power to accessory outlet.	(a) Circuit breaker tripped.	(a) Reset circuit breaker.
3. Spare lamp LED does not light.	(a) No spare lamp or spare lamp is not good.	(a) Install or replace spare lamp.

ACCESSORIES

DESCRIPTION	DA-LITE NUMBER
Dust Cover	77912
Spare Lamp (410W, 82V, ANSI Code FXL)	77842
Carrying Case	79084

LIMITED ONE YEAR WARRANTY ON DA-LITE OVERHEAD AND OPAQUE PROJECTORS

(Applicable in U.S.A.)

Da-Lite projectors (except lamps) are warranted against defects in material and workmanship for a period of one (1) year from the date of purchase by the original purchaser provided they are properly operated according to Da-Lite's instructions and are not damaged due to improper handling or treatment after shipment from the factory.

This warranty does not apply to equipment showing evidence of misuse, abuse, or accidental damage, or which has been tampered with or repaired by persons other than authorized Da-Lite personnel.

Da-Lite's sole obligation under this warranty shall be to repair or to replace (at Da-Lite's option) the defective part of the merchandise. Returns for service should be made to your Da-Lite dealer. If it is necessary for the dealer to return the machine or part to Da-Lite, transportation expenses to and from Da-Lite are payable by the purchaser and Da-Lite is not responsible for damage in shipment. To protect yourself against damage or loss in transit, insure the product and prepay all transportation expenses. Allow at least six weeks for correction of the defect.

THIS WARRANTY IS IN LIEU OF ALL OTHER WARRANTIES, EXPRESS OR IMPLIED, INCLUDING

WARRANTIES AS TO FITNESS FOR USE AND MERCHANTABILITY. Any implied warranties of fitness for use, or merchantability, that may be mandated by statute or rule of law are limited to the one (1) year warranty period. This warranty gives you specific legal rights, and you may also have other rights which vary from state-to-state. NO LIABILITY IS ASSUMED FOR EXPENSES OR DAMAGES RESULTING FROM INTERRUPTION IN OPERATION OF EQUIPMENT, OR FOR INCIDENTAL, DIRECT, OR CONSEQUENTIAL DAMAGES OF ANY NATURE.

In the event that there is a defect in materials or workmanship of our audio-visual product, you may contact our Customer Service Department at P.O. Box 137, Warsaw, Indiana 46581-0137 (219/267-8101).

IMPORTANT: THIS WARRANTY SHALL NOT BE VALID AND DA-LITE SHALL NOT BE BOUND BY THIS WARRANTY IF THE PRODUCT IS NOT OPERATED IN ACCORDANCE WITH DA-LITE'S WRITTEN INSTRUCTIONS.

Keep your sales receipt to prove the date of purchase and your original ownership.

IMPORTANT! KEEP THIS INFORMATION HANDY FOR FUTURE REFERENCE

(Applicable in U.S.A.)

SERVICE INFORMATION

A Return Authorization is required for ALL service work, whether the unit is in or out of warranty. Da-Lite will need the model and serial number in order to issue the Return Authorization.

If the unit is an obsolete model, you will be advised before you ship the unit, whether or not Da-Lite can make the repair.

Address your request for a Return Authorization to: Customer Service Department, Da-Lite Screen Company, Inc., P.O. Box 137, Warsaw, Indiana 46581-0137 or phone 219/267-8101 (Fax 219/267-7804).

Should you need service for your Da-Lite equipment after the warranty has expired, contact your local dealer. If it is necessary for the dealer to return the machine or part to Da-Lite, transportation expenses to and from Da-Lite are payable by the purchaser and Da-Lite is not responsible for damage in shipment. Pack the product in a sturdy box with plenty of protective packing material. To

protect yourself against damage or loss in transit, insure the product and prepay all transportation expenses. Da-Lite will refuse collect shipments. Allow at least six weeks for correction of the defect.

ENCLOSE complete information showing your name and address, what is wrong with the equipment, and the return shipping address. Tape the information to the equipment to be sure it does not get separated during the repair.

ADDRESS the package to the address shown on your Return Authorization.

CHARGES. If Da-Lite determines it will cost over 33% of current suggested retail price, you will be contacted for written approval of the estimated charges before the repair is made.

PAYMENT. When unit is repaired, it will be returned C.O.D. for cost of repair and shipping charges unless other arrangements have been made in advance.