



# EXECUTIVE® ELECTROL®

Automatic Electric Projection Screen Model

## SPECIFICATION DATA

DA-LITE SCREEN COMPANY, INC.  
3100 North Detroit Street  
Post Office Box 137  
Warsaw, Indiana 46581-0137  
Phone: 219/267-8101  
800-622-3737  
Fax: 219/267-7804  
http:// www.da-lite.com  
e-mail: info@da-lite.com

**SUGGESTED SPECIFICATIONS:** \_\_\_\_\_ projection screens, \_\_\_\_\_ (H) x \_\_\_\_\_ (W), electrically operated 120 volt (60 Hz) 2.9 amp. Three wire quick reversal motor especially designed for the purpose, to be ball bearing and oiled for life. With automatic thermal overload cut-out and integral interlocking gears. To have pre-set but accessible limit switches to automatically stop screen surface in the "up" and "down" positions. Stop action to be positive to prevent coasting. The roller to be of rigid metal at least 5" in diameter and mounted on two heavy duty brackets equipped with self-aligning bearings. Screen fabric to be flame retardant and mildew resistant with Matte White, Glass Beaded or High Power surface with black masking borders standard. Case to be of wood, with double top for extra rigidity and sound deadening. Motor compartment to be metal lined. A section of the bottom of the case shall be equipped with hinges and connected to the drive mechanism so that it opens and closes automatically with the lowering and raising of the screen surface. Balance of the bottom panel shall be pegged to manual opening to provide access. Hinges shall be mounted to allow matching of the bottom panel to the ceiling. **Specify Type 1 and 2 or Type 3 hinge, as required.** Case to be furnished with a primer coat, ready to accept final finish by others. To be complete with three position control switch in box with cover plate. Screen shall be listed by Underwriters' Laboratories and CSA.



**Matte White:** Seamless in all standard sizes.  
**Glass Beaded:** When both the height and width exceed 96", screen surface will have one or more horizontal seams.  
**High Power:** Available in sizes up to and including 9' by 12'. Horizontal seams required when both dimensions exceed 6'.

### DIMENSIONS

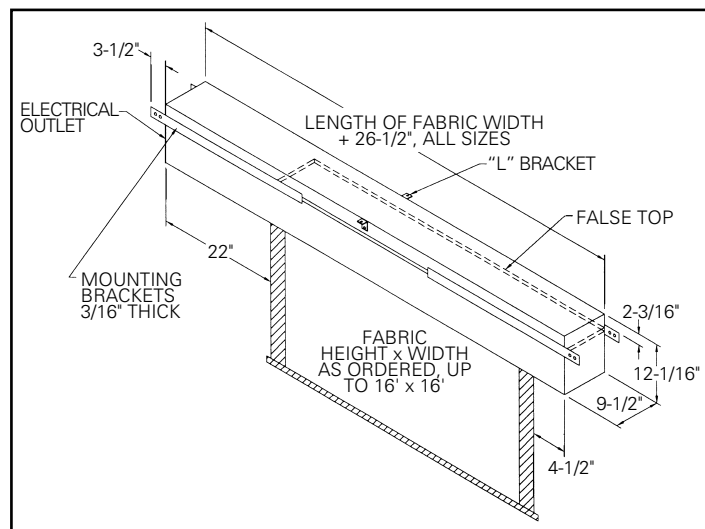
| Sizes       |           | *Overall Length of Case |     | Approx. Shipping Weight |        |
|-------------|-----------|-------------------------|-----|-------------------------|--------|
| H x W       | Cm        | In.                     | Cm  | Lbs.                    | Kg     |
| 50" x 50"   | 127 x 127 | 76-1/2"                 | 194 | 144                     | 65.32  |
| 60" x 60"   | 152 x 152 | 86-1/2"                 | 220 | 154                     | 69.85  |
| 70" x 70"   | 178 x 178 | 96-1/2"                 | 245 | 164                     | 74.39  |
| 84" x 84"   | 213 x 213 | 110-1/2"                | 280 | 184                     | 83.46  |
| 6' x 8'     | 183 x 244 | 122-1/2"                | 310 | 209                     | 94.80  |
| 8' x 8'     | 244 x 244 | 122-1/2"                | 310 | 211                     | 95.71  |
| 7' x 9'     | 213 x 274 | 134-1/2"                | 342 | 234                     | 106.14 |
| 9' x 9'     | 274 x 274 | 134-1/2"                | 342 | 237                     | 107.50 |
| 8' x 10'    | 244 x 305 | 146-1/2"                | 372 | 260                     | 117.94 |
| 10' x 10'   | 305 x 305 | 146-1/2"                | 372 | 263                     | 119.30 |
| 9' x 12'    | 274 x 366 | 170-1/2"                | 433 | 311                     | 141.07 |
| 12' x 12'   | 366 x 366 | 170-1/2"                | 433 | 316                     | 143.34 |
| 10'6" x 14' | 320 x 427 | 194-1/2"                | 494 | 403                     | 182.80 |
| 14' x 14'   | 427 x 427 | 194-1/2"                | 494 | 410                     | 185.98 |
| 12' x 16'   | 366 x 488 | 218-1/2"                | 555 | 459                     | 208.70 |
| 16' x 16'   | 488 x 488 | 218-1/2"                | 555 | 469                     | 212.74 |

**\*NOTE:** Add 7" to overall case length for mounting brackets.

**ALL SIZES:** Case width 9-1/2", case height 12-1/16".  
Overall case length dimensions  $\pm 1/4$ ".

Specifications subject to change without notice.

Detail dimensional drawings, wiring diagrams and installation instructions available upon request.



### WHEN ORDERING, MARK APPROPRIATE SELECTIONS:

#### Select method of installation:

- ☐ Type 1 and 2 - Offset or Flush Mounting
- ☐ Type 3 - Extended Mounting

#### Select viewing surface:

- ☐ Matte White
- ☐ Glass Beaded
- ☐ High Power

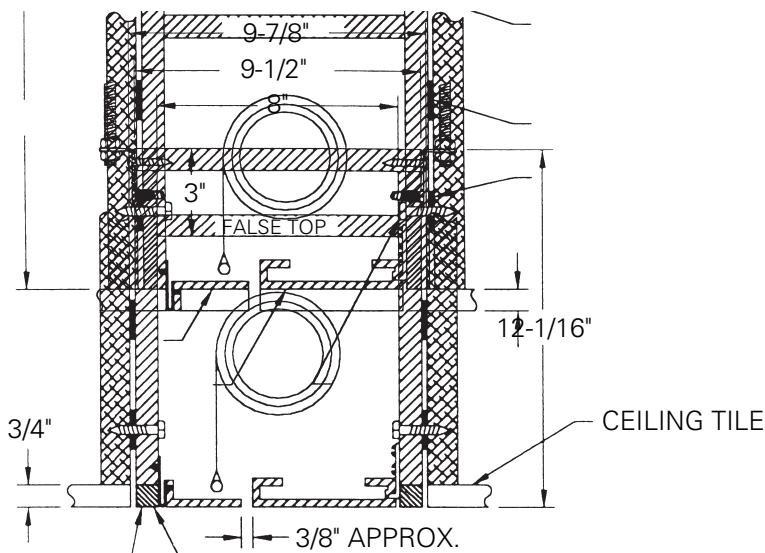
#### Options:

- ☐ Black "Extra Drop" to lower picture area more than normal. Maximum total drop 20' including picture area.
- ☐ White "Extra Drop" to lower picture area more than normal. Maximum total drop 20' including picture area.
- ☐ Single Motor Low Voltage Control System-3 Button.
- ☐ Wireless Remote Control for LVC System.
  - ☐ Radio Frequency Remote.
  - ☐ Infrared Remote.
- ☐ Locking Switch Cover Plate for 120V or LVC Switch.
- ☐ Key Operated Switch for 120V only (NOTE: cannot be used with low voltage system).
- ☐ No Borders (Black masking borders standard).
- ☐ 220 Volt (50 Hz) Motor.
- ☐ Video Projector Interface Control - 12V or 5V.

Project: \_\_\_\_\_  
Architect: \_\_\_\_\_  
Phone: \_\_\_\_\_  
Contractor: \_\_\_\_\_  
Phone: \_\_\_\_\_  
Supervisor: \_\_\_\_\_  
Phone: \_\_\_\_\_  
Supplier: \_\_\_\_\_  
Date: \_\_\_\_\_  
Revised: \_\_\_\_\_

## SUGGESTED METHODS OF INSTALLATION

### INCLUDING MOUNTING BRACKETS



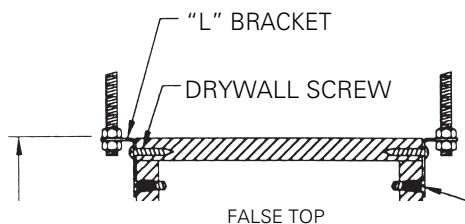
### TYPE 1 AND 2

**Offset mounting**, recessed above ceiling, for plaster, dry wall or paneling. Door painted same finish as ceiling.

### TYPE 1 AND 2

Allow 1/8" min. clearance all around surface door.

**Flush mounting**, recessed above ceiling. For use with 1/4" max. paneling or installation in existing ceiling using molding around door.

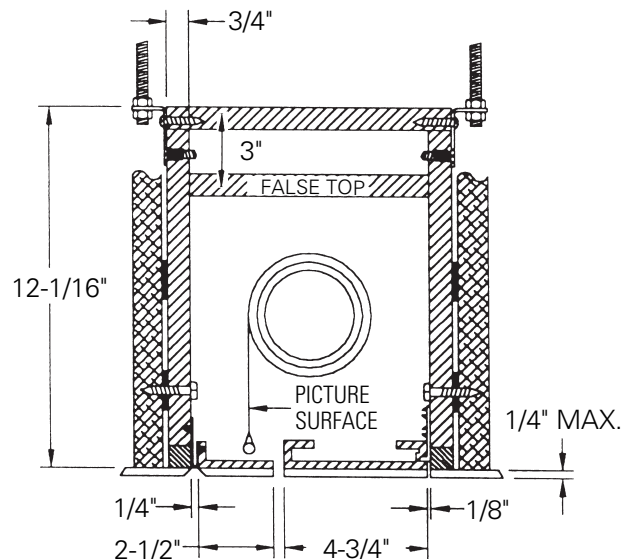


11-5/16"

SURFACE DOOR

ACCESS DOOR

1/4" x 2"  
LAG SCREW



1/4" x 1" SCREW  
& NUT INSERT

MOUNTING BRACKETS

SHIM

3/4"

### TYPE 3

Allow 1/4" min. clearance all around surface door.

**Extended mounting**, recessed above ceiling. For use with acoustical or other ceiling tile 3/4" thick laid over door.